

# Neighbourhood profile update Cambridge City East Neighbourhood

December 2011



**Steve Kerridge,**  
Neighbourhood Policing  
Inspector

**Lynda Kilkelly,** Safer  
Communities Manager,  
Cambridge City Council



|  |           |
|--|-----------|
| <b>1. INTRODUCTION</b>                                 | <b>2</b>  |
| Aim  | 2         |
| Methodology  | 2         |
| <b>2 PREVIOUS PRIORITIES &amp; ENGAGEMENT ACTIVITY</b> | <b>3</b>  |
| Previous Priorities                                    |           |
| Engagement Activity                                    | 9         |
| <b>3 EMERGING ISSUES</b>                               | <b>10</b> |
| <b>4 CURRENT CRIME &amp; INCIDENT LEVELS</b>           | <b>16</b> |
| <b>5 RECOMMENDATIONS</b>                               | <b>19</b> |

## 1. Introduction

### Aim

The aim of the Neighbourhood profile update is to provide an overview of action taken since the last reporting period, identify ongoing and emerging crime and disorder issues, and provide recommendations for future priorities and activity in order to facilitate effective policing and partnership working in the area. The document should be used to inform multi-agency neighbourhood panel meetings and neighbourhood policing teams, so that issues can be identified, effectively prioritised and partnership problem solving activity undertaken.

### Methodology

This document was produced using the following data sources:

- Crime data and incident data July 2011 – Oct 2011 and as a comparison data from March 2011 – June 2011 and July 2010 – Oct 2010
- Information from Neighbourhood Policing Team October 2011.
- Community intelligence.
- Environmental data from Cambridge City Council for the period July 2011 – October 2011, compared with the same period the previous year.

## 2. Previous Priorities & Engagement Activity

### Previous Priorities

At the neighbourhood panel meeting on 18<sup>th</sup> August 2011, the following issues were adopted as priorities. The tables below summarise action taken and the current situation regarding the priorities that were set:

| <b>Misuse of Green Spaces</b> |  |
|-------------------------------|--|
| <b>Objective</b>              | <b>To reduce seasonal crime and disorder in green spaces across the neighbourhood.</b>   |
| <b>Action Taken</b>           | <p>This action plan ran until 5<sup>th</sup> October 2011 and involved 16 hours of combined constable and PCSO dedicated patrols. Constable patrols were conducted both covertly in plain clothes and in high visibility. PCSO patrols were always conducted in high visibility and either on pedal cycle or on foot.</p> <p>Slightly prior to this action plan commencing we became aware of regular reports of drug dealing in the green spaces. These reports continued into this action plan period and, excluding Mill Road, they were the only frequently reported types of ASB and crime in the green spaces.</p> <p>During regular patrols officers and PCSOs managed to arrest 3 drug dealers, one drug dealer was detained by a PCSO in Coleridge Recreation ground after being observed in suspicious circumstances. Officers attended the location and took the male back to Parkside Station for a strip search which revealed a quantity of crack cocaine hidden on his person. Further enquiries found another linked male within a local bed and breakfast with a large quantity of cash and heroin in the room. Both were charged with being concerned in the supply of class A drugs and were bailed to court with conditions not to enter Cambridge city.</p> <p>A week later a suspected drug deal was observed by officers conducting covert patrols in Coldhams Lane skate park and after a foot chase and a struggle the officers detained both males and recovered wraps of heroin from inside one of their mouths. There was not enough evidence to charge either with supplying drugs but one was charged and the other cautioned for possessing heroin.</p> <p>We continued to receive reports of drug dealing in our green</p> |

|                               |   |
|-------------------------------|---|
|                               | <p>spaces, which led us to form Operation Significance whereby your East Neighbourhood Team applied for additional assistance from CID and the divisional proactive team to tackle this issue. We cannot for obvious reasons reveal too many details of our tactics but we can say that 8 officers were dedicated to patrol covertly our green spaces for 3 days. Due to the results we were achieving, these days were generally 16-18 hour working days for all involved.</p> <p>During this operation we managed to arrest 8 suspected drug dealers, conducted 7 drugs raids, seize £6735 cash, 12.446 grams of crack cocaine and 41.032 grams of heroin. The street value of these drugs will be in the region of £3,200. The majority of the drug dealers arrested were London based and using the Bail Act have been banned from Cambridge city pending the conclusion of our investigations or their trials.</p> <p>Reports of drug dealing in our green spaces have now completely subsided and drug dealers know these are 'no go' areas for their business.</p> |
| <b>Current Situation</b>      | Reports of anti-social behaviour and criminality in our green spaces have reduced considerable since the drug work activity that occurred very early into this reporting period. It is expected that these low levels will remain the during the coming winter months.  |
| <b>Continue or Discharge?</b> | Discharge.  |

| <b>Anti-Social Use of Mopeds</b> |   |
|----------------------------------|---|
| <b>Objective</b>                 | <b>Reduce the impact of anti-social use of mopeds: Coleridge Ward</b>   |
| <b>Action Taken</b>              | <p>Soon after this action plan was received the East Neighbourhood Team put an article in the local paper highlighting the problem to local residents. The article asked members of the public to provide registration numbers of offending mopeds to the police so appropriate action could be taken. The plan involved this tactic being supported by regular patrols, partnership working and community engagement.</p> <p>The public appeal had immediate success with many members of the public reporting anti-social use of mopeds and providing</p> |

|                                 |  |
|---------------------------------|--|
|                                 | <p>us with statements evidencing the behaviour. This allowed us to issue warnings under s59 of the Police Reform Act 2002, which informed riders/drivers that a reoccurrence of anti-social driving would result in us seizing their motor vehicle. Where there was a second occurrence we gathered the evidence and seized the offending vehicle, often taking other enforcement action such as reporting the individual for road traffic offences. We dealt with repeat offenders via a multi agency approach, working with housing agencies to enforce tenancy regulations and with the city council's ASB team.</p> <p>We also helped support a street surgery in the area with the city council and housing agencies whereby we gathered a range of information on local issues. The general consensus was that although things had dramatically improved in the area there were still issues to be resolved and individuals to be dealt with.</p> <p>In total we conducted 31 hours of dedicated high visibility patrols. Issued 20 s59 warnings, seized 7 mopeds, reported 3 drivers for driving without due care and attention and no MOT, issued 4 tenancy warning letters and worked very closely with an identified problem address to deal with persistent ASB problems.</p> <p>We have received very positive feedback from the public about this action plan and the following is an extract from one letter sent to the city council:</p> <p>"There most definitely has been a massive improvement, in reality it has been a total transformation. I can sleep at night. The mopeds do still make noise from time to time, but far less frequently and seem to realise the time that people go to bed and respect that. I think your team and the police have done a fantastic job, the improvement has been far greater and immensely faster than I could have hoped for and I hope you share this praise with those you are working with, you really have all done well."</p> |
| <p><b>Current Situation</b></p> | <p>Reports of ASB motorcycling in this area have consistently decreased during this action plan but we are still contacted occasionally to report issues in the area. We are currently trying to locate two further mopeds that need seizing due to anti-social driving.</p>   |

|                                      |   |
|--------------------------------------|---|
|                                      | <p>It is appreciated that whilst the noise levels emitted by the vast majority of mopeds are within permitted limits, the affect of such noise in residential communities when most people are sleeping can be particularly irritating.</p> <p>Officers will continue to engage with riders to raise awareness and appeal to them for the need to show consideration to affected communities.</p> |
| <p><b>Continue or Discharge?</b></p> | <p>For discussion.</p>  |

| <p><b>Speeding in Mill Road</b></p> |   |
|-------------------------------------|---|
| <p><b>Objective</b></p>             | <p><b>Apply interventions that encourage driver compliance with the new 20mph limit in Mill Road</b></p>  |
| <p><b>Action Taken</b></p>          | <p>During this action plan PCSOs initially engaged in an education campaign in the local area, engaging with local businesses and to highlight to the community that we would be taken action in response to the concerns raised. This received positive feedback.</p> <p>PCSOs then began conducting high visibility speed checks on Mill Road. The environment does create difficulties when undertaking speed checks and the safety of all road users and staff involved are key considerations as to where and when checks take place. It is therefore not possible to meet all expectations.</p> <p>The speed checks were conducted at varying times of the day and night but always between 08:00 hours and 24:00 hours. In total 16 hours of dedicated time was spent checking vehicle speeds in the 20 mph limit. In this time many vehicles were checked but only 27 were speeding, the majority of which were driving at 24mph or under. Only 2 were found to be driving over 30mph. All speeding drivers were spoken with.</p> <p>On 30<sup>th</sup> November a period of enforcement work was completed by non-neighbourhood officers as part of an overall plan to encourage driver compliance with the 20mph limit throughout the city. The results were as follows:</p> <p>Between 20:45 and 22:15, five officers and a supervisor were engaged in checks.</p> |

|                               |   |
|-------------------------------|---|
|                               | <p>15+ vehicle stops made and drivers warned for exceeding speed limit and travelling within the 20-30mph range.</p> <p>1 Fixed Penalty Notice issued for not wearing a seatbelt.</p> <p>1 arrest for driving under the influence of alcohol.</p> <p>1 arrest for possession of cannabis with intent to supply.</p> <p>5 stop searches.</p>   |
| <b>Current Situation</b>      | <p>The checks that have taken place to date do not show large numbers of drivers being identified as exceeding the 20mph limit. However, it is appreciated that checks are carried out by highly visible uniformed staff that are likely to be seen from a distance that allows drivers to reduce their speed before being registered by the operator. It should therefore not come as a surprise that the number of vehicles identified as meeting the prosecution threshold will be very low.</p> <p>Whilst it is noted that Mill Road has a concerning accident record it is not on a scale that meets the criteria for deployment of a less visible safety camera van.</p> <p>The value of such checks is difficult to assess but they clearly have a role. However, if they continue to be the only tactic to encourage compliance, meeting public expectation will be difficult to achieve. Further debate is welcomed.</p> |
| <b>Continue or Discharge?</b> | For discussion.   |

| <b>Drug dealing and related ASB in Norfolk Street and surrounding area.</b> |  |
|---|--|
| <b>Objective</b>  | Reduce drug and alcohol related ASB.   |
| <b>Action Taken</b>   | <p>A total of 60 hours dedicated high visibility patrol time has been spent on this action plan since it was agreed. Both police constables and PCSOs have been engaged on this activity and have challenged inappropriate behaviour, crime and ASB where appropriate. A focused engagement policy was adopted whereby officers and PCSOs would engage with street drinking groups regularly. Where appropriate groups were moved on and asked to clear up litter before doing so. In many cases street drinking groups were not doing anything wrong.</p> <p>Engagement has shown that many of these street drinkers leave hostel accommodation in the mornings and locate themselves near to St. Matthews School. Their presence alone</p> |

|                                 |   |
|---------------------------------|---|
|                                 | <p>can cause alarm to parents and children and other members of the local community.</p> <p>Officers have also covertly patrolled this area regularly, most notably during Operation Significance, which is described above. As with other green spaces in the city we did have several reports of drug dealing in Mill Road cemetery and York Street play park. We made two proactive arrests of suspected drug dealers. One drug dealer who brandished a knife at a police officer soon discarded it and ran off. He was caught and arrested. A drugs warrant was then conducted at an address in the area and a quantity of heroin and crack cocaine was recovered with some cash proceeds of crime. This offender was sentenced to 3 months in prison for the knife offence (drugs investigation is ongoing) and will be banned from Cambridge upon his release. The other drug dealer was found to be in possession of a knife but no drugs. He was charged and again banned from Cambridge using conditions available through the Bail Act.</p> <p>Numerous groups of street life were dispersed during this period however officers and PCSOs often found that groups were not doing anything wrong, either criminally or anti-socially. However, the reaction to these people was often one of fear or annoyance.</p> <p>During this priority officers have conducted 17 stop checks, 11 stop searches, made one arrest for stealing a cycle, issued 3 penalty notices for possessing cannabis, issued 3 penalty notices for unnecessary obstruction of the pavement and made several other arrests. We have also engaged regularly with local off licences and licensed premises and have worked with the licensing department to ensure licences are being adhered to.</p> <p>A temporary CCTV camera was deployed to the shop area on Norfolk Street which often gave us advance warning of potential ASB so problems were addressed at an early stage minimising the impact on the community.</p> |
| <p><b>Current Situation</b></p> | <p>We initially saw a strong decrease in anti-social behaviour and criminality in the area once the above described drug dealers had been dealt with. The groups of street life became smaller and more drink orientated.</p>   |



|                               |  |
|-------------------------------|--|
|                               | Reports of anti-social behaviour and other qualitative information would suggest that ASB is still an issue in the area, despite a fall in crime and significant police engagement. Residents are still very aware of the large street drinking population that gathers in the area and regularly report such groups for police attention. |
| <b>Continue or Discharge?</b> | Continue   |

### Engagement Activity

There had been large amounts of ASB and associated low-level crime around the Barnwell Community Centre. The Abbey officers engaged regularly with both staff and users of the community centre and the nursery and with the youths concerned. We are happy to report a substantial decrease in ASB in the area. It has also been arranged for offenders serving their sentence with community orders to conduct some refurbishment work in the area such as painting, decorating, cleaning and gardening.

Some good work by local officers identified and led to the arrest of two males who had placed skimming devices at cash points along Mill Road. We received 6 complaints of this crime within one month and in response we worked with local businesses to install cameras that in turn took pictures of the offenders. They were then spotted and arrested by officers on patrol.

The city has seen a rise in vehicle crime in the last few weeks, which has led to officers working on a dedicated team in order to catch the offenders. Please ensure valuables are kept out of your vehicles and remain vigilant to suspicious activity.

In August officers from the East team recovered £13,000 of high purity cocaine which when mixed could have yielded £30,000 - £40,000 of street value cocaine. We received some 'hot' community intelligence, which was acted upon by conducting a drugs search warrant. Two males were in the property, both known class A drugs suppliers and importers. Despite their attempts to obstruct officers, entry was gained, evidence recovered and both men arrested. We are pleased to report they have been convicted following a weeklong trial and have been sentenced to 17 years imprisonment between them.

### 3. Emerging Issues

#### Cambridge East Trends

Offence levels across the neighbourhood have decreased compared last period (1090 offences vs. 1117 offences) and also decreased compared to the same period last year (1386 offences).

ASB incidents across the neighbourhood have decreased with 739 incidents this period compared to 755 last period and 821 in the same period last year.

Please note that when this section was completed data for November was not available. This will be available at the meeting.

#### Abbey Ward

- Total crime in Abbey Ward decreased compared to the previous four months (344 offences vs. 386 offences) and also decreased compared to the same period last year (388 offences).
- Dwelling burglary offences have decreased with 13 offences in this period compared to 17 in the last period and 32 in the same period last year. Of 5 of these offences offenders have gained entry through insecure windows or doors.
- There were 10 burglary other offences in this period compared to 19 offences in the previous period and 10 offences in the same period last year. Half of these offences involved sheds being broken in to and various items stolen.
- Violent crime offences have decreased to 82 offences from 91 offences in the previous period and 80 offences in the same period last year. Offenders were arrested and charged in 43 of these offences.
- Theft from vehicle offences have remained stable to the previous period (18 offences for both) and decreased compared to the same period last year (36 offences). Common items stolen were index plates, satellite navigation systems and catalytic converters.
- Theft from shop offences have decreased compared to the previous period (42 offences vs. 49 offences) and the same period last year (52 offences). Offenders were arrested and charged in 22 of these offences. The most common location for offences was Boots at Cambridge Retail Park, which had 24. The most common items that were stolen were perfume and electrical items.
- ASB levels have decreased slightly compared to the previous period (253 incidents vs. 256 incidents) but decreased compared to the same period

last year (270). There were 25 calls regarding incidents in Barnwell Road, various incidents included groups of youths being loud and drinking in the street and neighbour disputes.

- Between July and October 2011, there were 6 reports of abandoned vehicles in the ward compared with 10 during the same period the previous year. This included 1 vehicle, which was not on site following inspection and 1, which was subsequently claimed by the owner. There were no specific hotspots during either period.

### **Environmental Services Data**

- Between July and October 2011, there were 104 reports of fly tipping in the ward compared with 72 during the same period the previous year. There was sufficient evidence for the enforcement team to be involved in 14 cases and as a result of their investigations 7 formal warning letters were sent to domestic offenders and one case is part of an ongoing investigation. In addition, 2 verbal warnings were issued and waste transfer documentation was requested from a trade offender. Dennis Road (12), Helen Close (11), Cheddars Lane (9) and Fison Road (8) were the main hotspots during the current reporting period. The offences at Cheddars Lane accounted for 3 of the formal warning letters being sent and Dennis Road accounted for 1 of the formal warning letters being sent. Ekin Road (12), Anns Road (6), Dennis Road (6) and Helen Close (6) were the main hotspots during the previous year.
- Between July and October 2011, 26 derelict cycles were dealt with compared with 32 during the same period the previous year. Riverside (8), Coldham's Lane (5), Vicarage Terrace (4) and Newmarket Road (3) were the main hotspots during the current reporting period. Ekin Road (9), Riverside (9), Fison Road (4) and Occupation Road (3) were the main hotspots during the previous year.
- Between July and October 2011, 307 needles were reported compared with 25 during the same period the previous year. 197 were removed from Stourbridge Common on 6 different occasions. During the previous reporting period 13 needles were removed from Brooks Road.

### **Petersfield Ward**

- Total crime in Petersfield Ward has increased compared to the previous period (355 offences vs. 337 offences) but decreased compared to the same period last year (500 offences).
- Dwelling burglary offences have decreased compared to the previous period (14 offences vs. 17 offences) and have decreased compared to the same period last year (35 offences). Three of the offences occurred in York Terrace over a couple of days in August.
- Violent crime offence levels have increased compared to the previous period (43 offences vs. 32 offences) but have shown a decrease compared

to the same period last year (49 offences). In 21 of these offences an offender has been arrested and charged.

- Cycle theft offences have increased compared to the previous period (112 offences vs. 94 offences) but decreased compared to the same period last year (191 offences). Common locations for cycle theft offences were Parkside Pools and Kelsey Kerridge Sports Hall on Queen Anne Terrace.
- There were 36 theft from shop offences in this period compared with 51 offences in the previous period and 64 offences in the same period last year. Offenders were arrested and charged in 29 of these offences. Common locations for theft from shop offences were Asda at the Beehive Centre (24) and TK Maxx at the Beehive Centre (5).
- Criminal Damage offences have decreased with 22 offences in this period compared to 39 in the previous period and 28 in the same period last year. Eight offences occurred in Mill Road at various business premises.
- ASB incidents have decreased compared to both the previous period (169 incidents vs. 180 incidents) and compared to the same period last year (184 incidents). Incidents included street drinking (34 incidents were complaints about street-life being abusive and being intimidating to Members of the public), youths congregating and being abusive to members of the public and abandoned vehicles. Common locations for ASB were Mill Road (30), Norfolk Street (20), East Road (10), Staffordshire Street (10) and Tenison Road (10).

### **Environmental Services Data**

- Between July and October 2011, there were 16 reports of abandoned vehicles in the ward compared with 7 during the same period the previous year. This included 5 vehicles, which were not on site following inspection and 3, which were subsequently claimed by their owners. In addition, 3 CLE26 notices were issued to offenders on behalf of the DVLA for not displaying road tax on a public highway, which will result in a fine being issued by the DVLA. 1 vehicle was also impounded on behalf of the DVLA for not having valid road tax. 1 additional vehicle is currently pending further investigation. Cheddars Lane (3) was the hotspot during the current reporting period. There were no specific hotspots for the same period the previous year.
- Between July and October 2011, there were 77 reports of fly tipping in the ward compared with 86 during the same period the previous year. There were 32 cases forwarded to the enforcement team. 4 cases are currently ongoing, 15 formal warning letters were issued to domestic offenders and waste transfer documentation was requested from 1 trade offender, 1 household was given a verbal warning and 1 case involved fly tipping on private land which was passed to the Environmental Health Department for further investigation. Mill Road (20), Tenison Road (9), St Matthews Street (8) and Emery Street (4) were the main hotspots during the current

reporting period. The offences at Mill Road accounted for 12 of the formal warning letters being sent and the offences at Tenison Road accounted for 3 of the warning letters. Tenison Road (14), Mill Road (13), St Matthews Street (8), Sleaford Street (5) and Mill Street (4) were the main hotspots during the previous year.

- Between July and October 2011, 14 derelict cycles were dealt with compared with 72 during the same period the previous year. Vicarage Terrace (4) & Mill Road (3) were the main hotspots during the current reporting period. Mill Road (19), Covent Garden (4), Norfolk Street (4) and St Matthews Street (4) were the main hotspots during the previous year.
- Between July and October 2011, 383 needles were reported compared with 685 during the same period the previous year. 100 needles were removed from East Road Garages and 177 needles were removed from Mill Road, this includes the Cemetery. During the previous reporting period 554 needles were removed from Mill Road, again this is including the Cemetery.

### **Romsey Ward**

- Total crime in Romsey Ward has decreased compared to the preceding period (232 vs. 236) and compared to the same period last year (254).
- There were 7 Dwelling Burglary offences compared to 16 in the last period and 13 in the same period last year. There were no patterns noted from the MO details.
- There were 7 burglary other offences in this period compared to 10 offences in the previous period and 11 offences in the same period as last year. Four offences occurred over one night in July in Coldhams Road where industrial units were entered.
- Theft from vehicle offences have slightly increased from 14 offences in the previous period to 15 offences in this period. Offence levels have decreased compared to the same period last year when there were 20 offences. Three vehicles had number plates stolen and the remainder entry was gained via a smashed window and items such as satellite navigation systems, handbags and laptops were stolen.
- Theft from shop offences have remained stable with 26 offences in this period compared to 25 offences in the previous period and 17 offences in the same period last year. Common locations for theft from shop offences were Sainsburys on Coldhams Lane and the Co-Op on Mill Road.
- Criminal Damage offences have remained stable compared to the previous period (30 offences vs. 31 offences) and compared to the same period last year (28 offences). Fourteen of these offences were criminal damage to a vehicle with vehicles having their tyres slashed, their windscreens smashed, paintwork scratched and wing mirrors snapped off.
- ASB levels have decreased compared to the previous period (168 incidents vs. 187 incidents) and also compared to the same period last

year (208 incidents). Twelve incidents occurred at the same address in Cromarty Place and concern a male complaining about his neighbours. Locations with high levels of ASB were Mill Road (46), St Philips Road (10), and Coldhams Lane (9).

### **Environmental Services Data**

- Between July and October 2011, there were 7 reports of abandoned vehicles in the ward compared with 12 during the same period the previous year. This included 2 vehicles, which were not on site following inspection. In addition, 1 CLE26 notice was issued to an offender on behalf of the DVLA for not displaying road tax on a public highway, which will result in a fine issued by the DVLA. 1 vehicle was also impounded on behalf of the DVLA for not having valid road tax. 1 additional vehicle is also currently pending further investigation. Cavendish Road (4) was the hotspot during the current reporting period. There were no specific hotspots for the same period the previous year.
- Between July and October 2011, there were 45 reports of fly tipping in the ward compared with 46 during the same period the previous year. The Enforcement Team investigated 21 cases and as a result 1 case is currently ongoing, 6 formal warning letters were sent to domestic offenders and waste transfer documentation was requested from 3 trade offenders. One resident received a verbal warning. Brooks Road (17), Seymour Street (6), Mill Road (3) and Wycliffe Road (3) were the main hotspots during the current reporting period. The offences at Brooks Road accounted for 6 of the formal warning letters being sent. Sedgwick Street (5), Catharine Street (4), Cromwell Road (4), Mill Road (4), Seymour Street (4) and Thoday Street (4) were the main hotspots during the previous year.
- Between July and October 2011, 4 derelict cycles were dealt with compared with 10 during the same period the previous year. There were no specific hotspots during the current reporting period. Mill Road (3) was the hotspot during the previous year.
- Between July and October 2011, 47 needles were reported compared with 89 during the same period the previous year. 16 were removed from Romsey Recreation Ground, 14 from Coldhams Land and 12 removed from Charles Street. During the previous reporting period 52 needles were removed from Brooks Road and 26 were removed from Seymour Street.

### **Coleridge Ward**

- Total crime in Coleridge Ward has remained stable (159 offences vs. 158 offences) and decreased compared to the same period last year (244 offences).
- Dwelling burglary offences have increased compared to the previous period (14 offences vs. 9 offences) and compared to the same period last

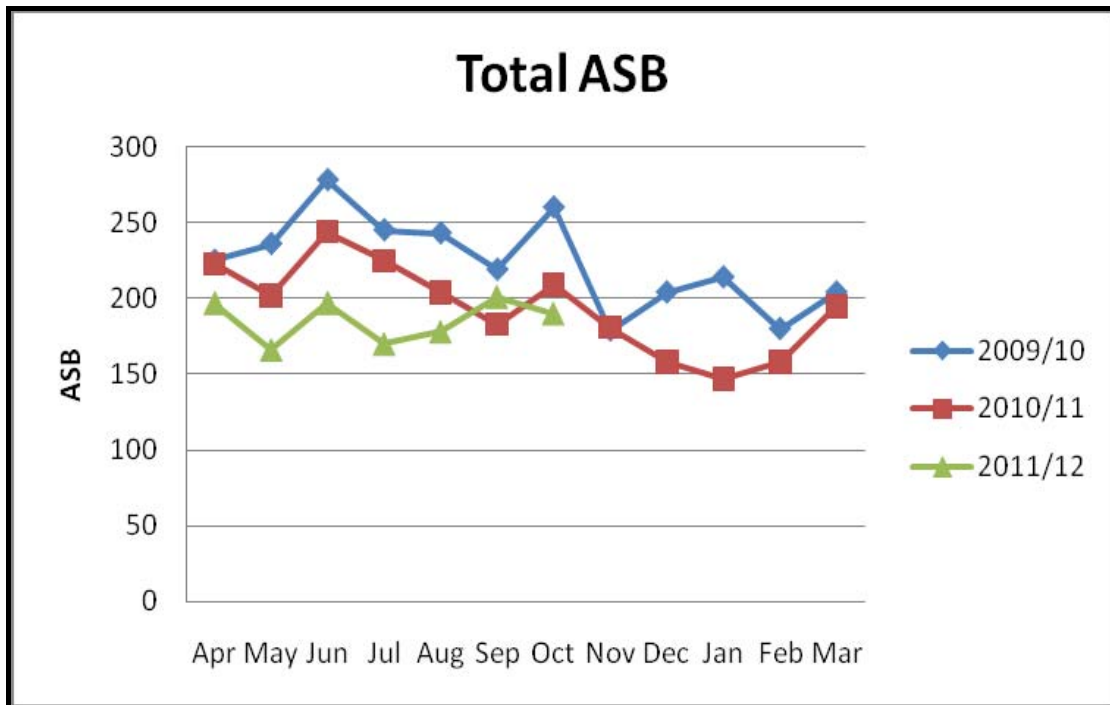
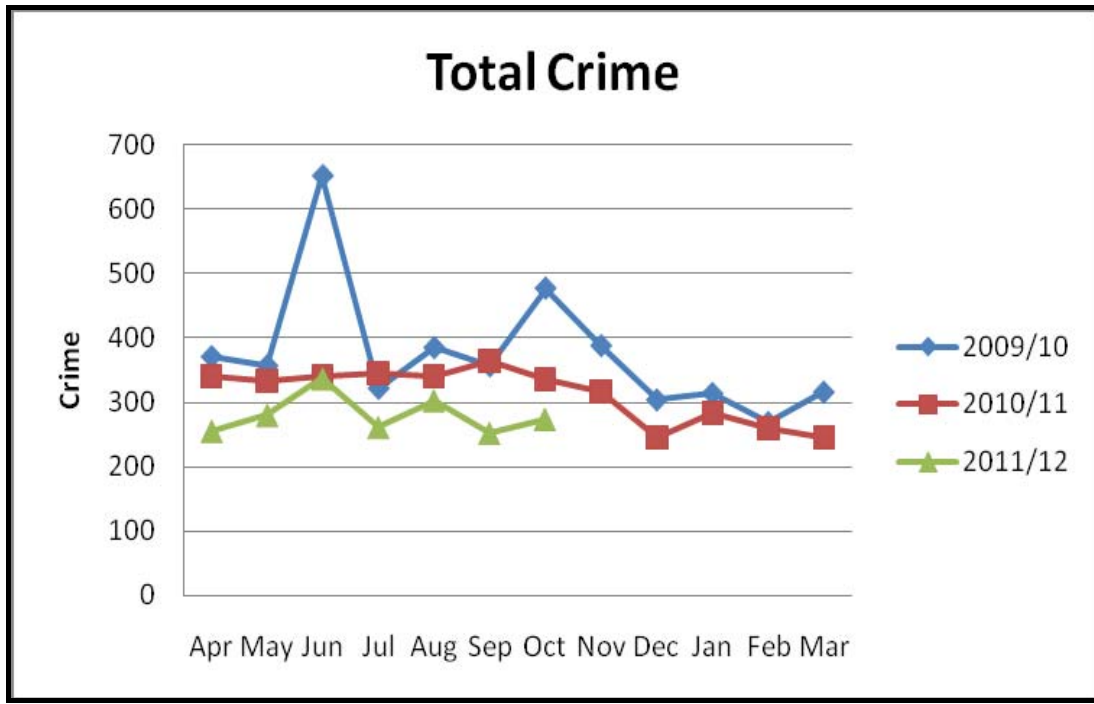
year (6 offences). Three offences occurred in Perne Road in September. The same offender has been charged with 2 out of these three offences.

- Violent crime offences have increased compared to the previous period (34 offences vs. 26 offences) but decreased compared to the same period last year (54 offences). Offenders were arrested and charged in 16 of these offences. Common locations for violent crime were Cambridge Leisure Park (6) and Cherry Hinton Road (5).
- There were 5 theft from vehicle offences in this period compared to 16 offences in the previous period and 19 offences in the same period last year. Items stolen included catalytic converters, diesel and a satellite navigation system.
- Cycle theft offences have decreased from 27 offences in the previous period to 24 offences in this period. This is also a decrease compared to the same period last year (64 offences).
- ASB incident levels have increased slightly compared to the previous period (149 incidents vs. 132 incidents) but have decreased compared to the same period last year (159 incidents). Common locations for ASB were Cherry Hinton Road (23), St Thomas's Road (10), Birdwood Road (11) and Cambridge Leisure Park (10).

### **Environmental Services Data**

- Between July and October 2011, there were 4 reports of abandoned vehicles in the ward compared with 12 during the same period the previous year. This included 1 vehicle, which was not on site following inspection and 2, which were subsequently claimed by their owners. There were no specific hotspots during either period.
- Between July and October 2011, there were 19 reports of fly tipping in the ward compared with 30 during the same period the previous year. Two cases were forwarded to the Enforcement Team and formal warning letters were issued to both domestic offenders. Davy Road (3) was the hotspot during the current reporting period. Ashbury Close (3), Hobart Road (3), Rustat Road (3) and Suez Road (3) were the main hotspots during the previous year.
- Between July and October 2011, 10 derelict cycles were dealt with compared with 20 during the same period the previous year. Leisure Park (8) was the hotspot during the current reporting period. Mamora Road (10) and Litchfield (3) were the main hotspots during the previous year.
- Between July and October 2011, 8 needles were reported compared with 77 during the same period the previous year. All 8 were removed from Coleridge Recreation Ground. During the previous reporting period 33 needles were removed from Coleridge Recreation Ground and 27 were removed from Davy Road.

#### 4. Current Crime and Anti-Social Behaviour Incident Levels





## Crime and Anti-Social Behaviour Incident Levels in the Cambridge East Neighbourhood, by Ward

|              |                    |                        | Dwelling Burglary | Other Burglary | All Violent Crime (excl. Robbery) | Robbery | Theft of Vehicle | Theft from Vehicle | Cycle Theft | Theft from Shop | Criminal Damage | Other Crime | Total Crime | Total ASB  |
|--------------|--------------------|------------------------|-------------------|----------------|-----------------------------------|---------|------------------|--------------------|-------------|-----------------|-----------------|-------------|-------------|------------|
| <b>N'hod</b> | <b>City East</b>   | <i>Jul 11 – Oct 11</i> | 48                | 34             | 204                               | 11      | 14               | 49                 | 230         | 105             | 121             | 274         | <b>1090</b> | <b>739</b> |
|              |                    | <i>Mar 11 – Jun 11</i> | 59                | 48             | 183                               | 9       | 15               | 60                 | 208         | 132             | 144             | 259         | <b>1117</b> | <b>755</b> |
|              |                    | <i>Jul 10 – Oct 10</i> | 86                | 48             | 227                               | 12      | 19               | 107                | 373         | 156             | 130             | 228         | <b>1386</b> | <b>821</b> |
| <b>Wards</b> | <b>Abbey</b>       | <i>Jul 11 – Oct 11</i> | 13                | 10             | 82                                | 6       | 3                | 18                 | 41          | 42              | 51              | 78          | <b>344</b>  | <b>253</b> |
|              |                    | <i>Mar 11 – Jun 11</i> | 17                | 19             | 91                                | 2       | 6                | 18                 | 42          | 49              | 52              | 90          | <b>386</b>  | <b>256</b> |
|              |                    | <i>Jul 10 – Oct 10</i> | 32                | 10             | 80                                | 4       | 9                | 36                 | 53          | 52              | 54              | 58          | <b>388</b>  | <b>270</b> |
|              | <b>Petersfield</b> | <i>Jul 11 – Oct 11</i> | 14                | 15             | 43                                | 4       | 3                | 11                 | 112         | 36              | 22              | 95          | <b>355</b>  | <b>169</b> |
|              |                    | <i>Mar 11 – Jun 11</i> | 17                | 13             | 32                                | 1       | 5                | 12                 | 94          | 51              | 39              | 73          | <b>337</b>  | <b>180</b> |
|              |                    | <i>Jul 10 – Oct 10</i> | 35                | 18             | 49                                | 2       | 6                | 32                 | 191         | 64              | 28              | 75          | <b>500</b>  | <b>184</b> |
|              | <b>Romsey</b>      | <i>Jul 11 – Oct 11</i> | 7                 | 7              | 45                                | 0       | 8                | 15                 | 53          | 26              | 30              | 41          | <b>232</b>  | <b>168</b> |
|              |                    | <i>Mar 11 – Jun 11</i> | 16                | 10             | 34                                | 3       | 2                | 14                 | 45          | 25              | 31              | 56          | <b>236</b>  | <b>187</b> |
|              |                    | <i>Jul 10 – Oct 10</i> | 13                | 11             | 44                                | 4       | 2                | 20                 | 65          | 17              | 28              | 50          | <b>254</b>  | <b>208</b> |
|              | <b>Coleridge</b>   | <i>Jul 11 – Oct 11</i> | 14                | 2              | 34                                | 1       | 0                | 5                  | 24          | 1               | 18              | 60          | <b>159</b>  | <b>149</b> |
|              |                    | <i>Mar 11 – Jun 11</i> | 9                 | 6              | 26                                | 3       | 2                | 16                 | 27          | 7               | 22              | 40          | <b>158</b>  | <b>132</b> |
|              |                    | <i>Jul 10 – Oct 10</i> | 6                 | 9              | 54                                | 2       | 2                | 19                 | 64          | 23              | 20              | 45          | <b>244</b>  | <b>159</b> |

## ASB Incident Types in the City East Area Neighbourhood, by Ward

### Please Note

Incident levels for each of the wards may not be consistent with the official figures that will be published by the Force and Home Office. This is because the data system used to draw the level of detail needed for the ASB type breakdown for this report may not contain precise locations due to the way incidents are reported e.g. ASB reported where ward boundaries lie could initially be recorded in the neighbouring ward but subsequently corrected. The figures should only be used as a guide and not regarded as official statistics for publication.

|                   |             |                | Abandoned Vehicle<br>Not Stolen | Begging/Vagrancy | Malicious/ Nuisance<br>Communication | Neighbour Dispute | Noise- All Types | Road Related | Rowdy/Nuisance<br>Incident | Street Drinking | Vehicle Related<br>Nuisance | Violence |
|-------------------|-------------|----------------|---------------------------------|------------------|--------------------------------------|-------------------|------------------|--------------|----------------------------|-----------------|-----------------------------|----------|
| N <sup>Hood</sup> | City East   | Jul 11- Oct 11 | 49                              | 10               | 40                                   | 20                | 67               | 14           | 367                        | 20              | 59                          | 44       |
|                   |             | Mar 11 -Jun 11 | 54                              | 14               | 47                                   | 16                | 87               | 19           | 422                        | 16              | 45                          | 59       |
| Wards             | Abbey       | Jul 11- Oct 11 | 9                               | 2                | 18                                   | 4                 | 18               | 5            | 118                        | 3               | 18                          | 11       |
|                   |             | Mar 11 -Jun 11 | 6                               | 1                | 16                                   | 7                 | 25               | 6            | 131                        | 0               | 17                          | 21       |
|                   | Petersfield | Jul 11- Oct 11 | 6                               | 4                | 1                                    | 2                 | 9                | 3            | 89                         | 12              | 7                           | 8        |
|                   |             | Mar 11 -Jun 11 | 4                               | 2                | 7                                    | 1                 | 9                | 2            | 111                        | 13              | 5                           | 11       |
|                   | Romsey      | Jul 11- Oct 11 | 11                              | 1                | 7                                    | 4                 | 24               | 1            | 77                         | 2               | 10                          | 11       |
|                   |             | Mar 11 -Jun 11 | 8                               | 5                | 0                                    | 5                 | 42               | 6            | 79                         | 0               | 4                           | 11       |
|                   | Coleridge   | Jul 11- Oct 11 | 23                              | 3                | 14                                   | 10                | 15               | 5            | 83                         | 3               | 24                          | 14       |
|                   |             | Mar 11 -Jun 11 | 36                              | 0                | 16                                   | 0                 | 11               | 5            | 101                        | 3               | 19                          | 16       |

## **5. Recommendations**

The following Neighbourhood Priorities are recommended for consideration:

- Continue to address ASB related to drug and alcohol misuse in the Petersfield area.